

PRETESTS**A. IMBALANCE IN CIRCUIT**

1. **Eyes Closed - Mask.**
2. **Access Sphenoid Imbalance.**
Client pushes tongue firmly up against the roof of their mouth.
If the IM changes - STACK.

OPTIONAL - Only if teeth strong

3. **Access Sphenoid Imbalance.**
Client gently spreads the Maxilla with their thumbs.
If the IM changes - STACK.

An Imbalance must be in Circuit to continue.

INFORMATION

4. **Visually Scan General TMJ Scan List.**
Say and **STACK ALL IM changes.**

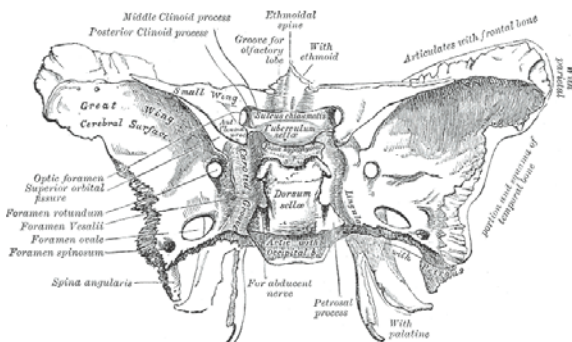
**B. ACCESS EMOTIONS
OPTIONAL****C. FAST FIX**

Retest Sphenoid after Vision Balance.

See the Sphenoid in 3D

<http://www.csuchico.edu/anth/Module/sphenoid.html>

Sphenoid - Wikipedia.com

**PRETESTS - Do not STACK the IM changes.**

Clear IM - IM will *Unlock and Lock.*
Say "**Water, Hydration, Dehydration.**"
Switching - Up / Down, Left / Right, Front / Back.
Say "**Challenge permission to Test.**"
IM must Unlock temporarily.

A. IMBALANCE

1. **Client Closes Eyes - Wears a Mask and tissue.**
2. **Access Sphenoid through Palatine and Vomer.**
Monitor the IM as - Client pushes tongue firmly up against the roof of the mouth at the back.
If the IM changes an Imbalance is accessed - STACK.

OPTIONAL - Only if teeth strong

3. **Pressure to the Palatines to Challenge Sphenoid.**
Test IM - Locked/Unlocked. Maintain skin contact as Client gently spreads apart their back teeth with their thumbs - STACK.
If the IM has changed - an Imbalance is in Circuit.
Only do Step 3 if the state/country laws allow this.

4. **Access Optimum Related INFORMATION.**
Visually Scan Scan Lists - **STACK every IM change.**

B. ACCESS EMOTIONS

Access Emotions.
Visually Scan Emotions - *If No IM change Fast Fix.*
Re-Test Steps 3 - 4 with Mask. *Locked /Unlocked IM.*

C. CORRECT - FAST FIX

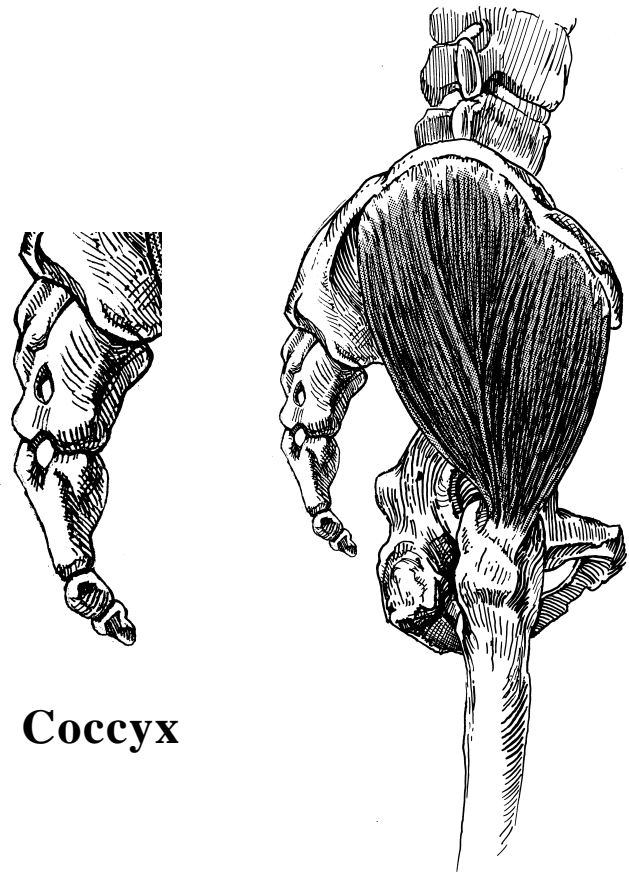
PRETESTS

Clear IM - IM will *Unlock and Lock*.
 Say "**Water, Hydration, Dehydration.**"
 Switching - Up / Down, Left / Right, Front / Back.
 Say "**Challenge permission to Test.**"
IM must Unlock temporarily.

A. IMBALANCE IN CIRCUIT

1. **Eyes Closed - Mask.**
2. **Access Coccyx Imbalance.**
 Client **gently** pushes Coccyx:
 Towards head
 Left
 Right
STACK *all IM changes.*

An Imbalance must be in Circuit to continue.



Coccyx

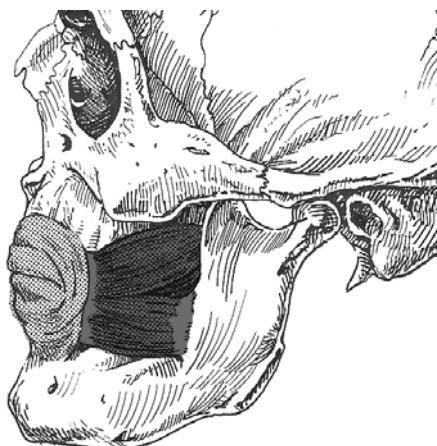
INFORMATION

3. Visually Scan **General TMJ Scan List.**
 Say and **STACK ALL IM changes.**

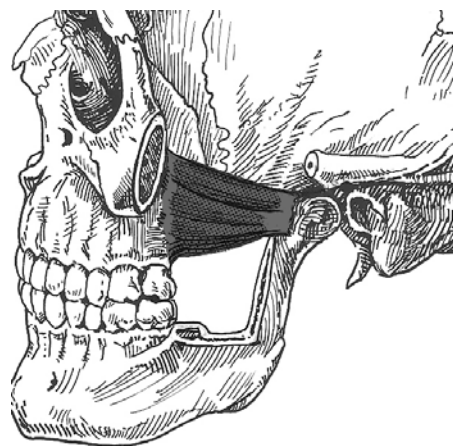
**B. ACCESS EMOTIONS
 OPTIONAL**

C. FAST FIX

BUCCINATOR



LATERAL PTERYGOID



MEDIAL PTERYGOID

